


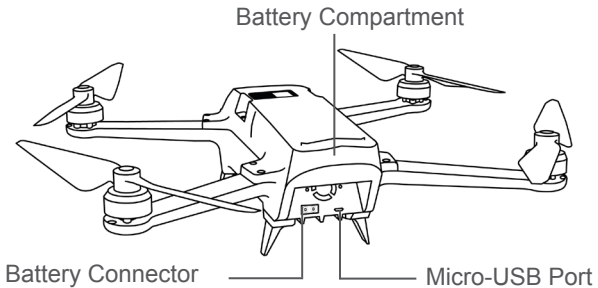
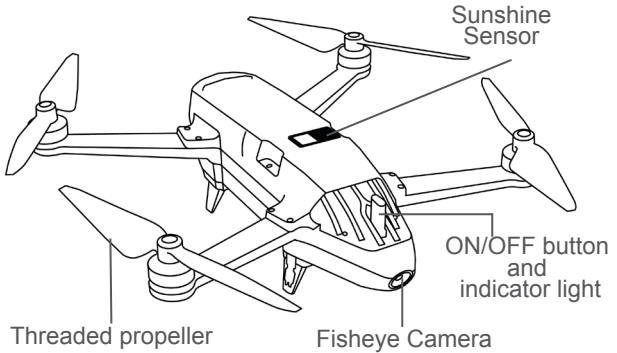
Your Parrot Bluegrass™ contains the following elements:

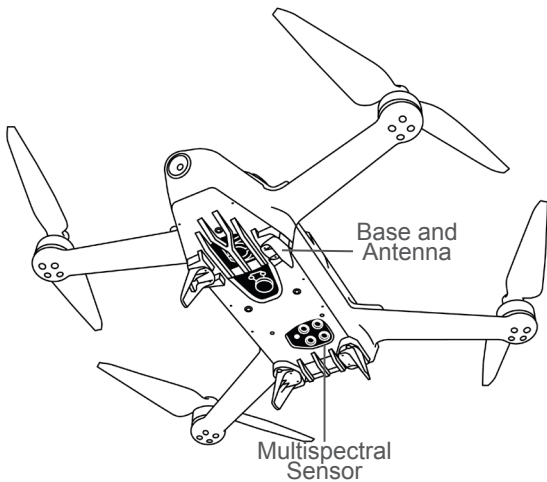
1. A Parrot Bluegrass™ drone;
2. A Parrot Skycontroller 2™ controller. You can fly your Parrot Bluegrass with the Parrot Skycontroller 2 by downloading the FreeFlight Pro™ app to your smartphone or tablet. This app is free of charge but might contain In-App Purchase. It also allows you to calibrate your Parrot Bluegrass;
3. A Sequoia™ sensor containing:
  - (a) A multispectral sensor that captures the light reflected by plants; and
  - (b) A sunshine sunlight sensor that records the intensity of light emanating from the sun
4. Access to Airinov First+™ services allowing you to obtain your NDVI and zoning maps from the images captured by the free Pix4Dcapture™ app to download to your smartphone or tablet.

# WARNING

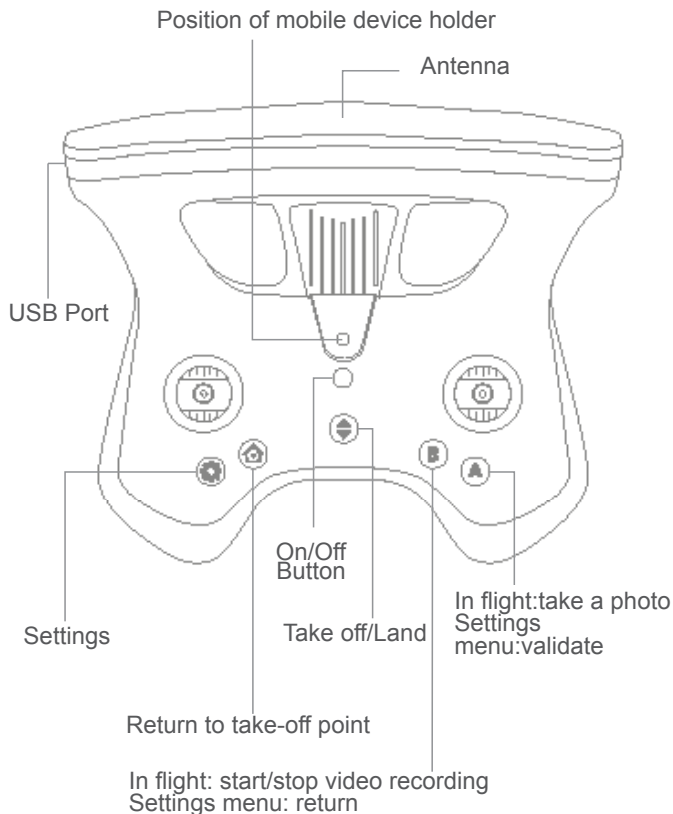
1. Parrot Bluegrass IS NOT A TOY. It should therefore not be used or handled by children under the age of 14.
2. BEFORE USING Parrot Bluegrass:
  - (A) CAREFULLY READ this User Guide and all information and documentation available at [www.parrot.com](http://www.parrot.com), which may be updated at any time and without prior notice (hereinafter, "Parrot Documentation"). SPECIAL ATTENTION should be given to the paragraphs containing the symbol  ;
  - (B) ENSURE YOU ARE AWARE OF THE APPLICABLE REGULATIONS FOR THE USE OF DRONES AND THEIR ACCESSORIES (hereinafter, referred to as "Applicable Regulations"); and
  - (c) KEEP IN MIND that Parrot Bluegrass is prone to expose others and yourself to PROPERTY DAMAGE AND/OR BODILY HARM and may even lead to severe, or even fatal injuries.
3. Please note that the videos and photos used in publicity and advertising campaigns by Parrot Drones SAS and its subsidiaries have been created by and with professionals and experienced pilots. PLEASE CONTINUOUSLY REFER TO THE LATEST UPDATES TO PARROT DOCUMENTATION IN CASE OF DOUBT CONCERNING THE USE OF YOUR PARROT BLUEGRASS AND ITS ACCESSORIES.
4. WITHIN THE LIMITS OF APPLICABLE LAW, PARROT DRONES SAS, ITS SUBSIDIARIES AND THEIR DISTRIBUTORS AND RESPECTIVE RETAILERS WILL NOT BE HELD RESPONSIBLE FOR ANY INJURY RESULTING FROM OR IN RELATION TO THE NON-RESPECT OF PARROT DOCUMENTATION OR APPLICABLE REGULATIONS BY YOURSELF OR BY ANY PERSON USING YOUR PARROT BLUEGRASS.

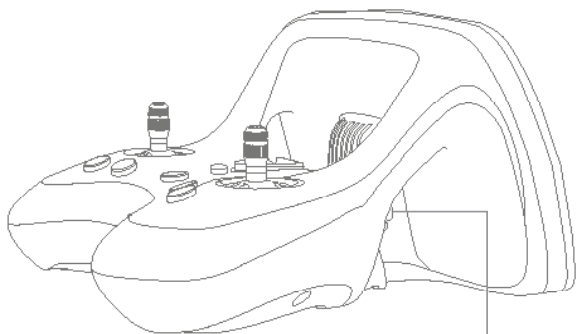
# PARROT BLUEGRASS PRESENTATION





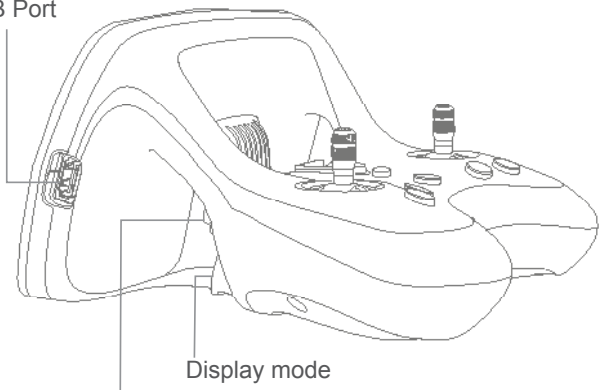
# PARROT SKYCONTROLLER 2 PRESENTATION





Camera Exposure

USB Port



Display mode

Vertical orientation of the camera

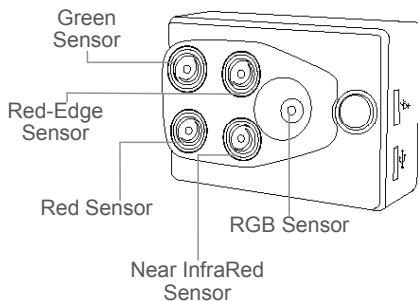
# SEQUOIA PRESENTATION

Sequoia is made up of a multispectral sensor and a sunshine irradiance integrated into Parrot Bluegrass.

Sequoia is a multispectral sensor specifically for farming. Its design was created according to three principal criteria: excellent precision, minimal size and weight, optimal ease of use. The Sequoia sensor is designed to be suitable for all types of drones, those with fixed wings and multi-rotors and mounted on gimbals or not. Its use allows the capture of images of agricultural plots in several spectral bands measuring the state of vegetation: green (550 nm wavelength, 40 nm bandwidth), red (660 nm wavelength, 40 nm bandwidth), red-edge (735 nm wavelength, 10 nm bandwidth) and near InfraRed (790 nm wavelength, 40 nm bandwidth).

The photos taken can then be analysed using various software. They can be used to make indexed maps (NDVI, NDRE, etc.) and make recommendations regarding nitrogen fertilisation.

## MULTISPECTRAL SENSOR



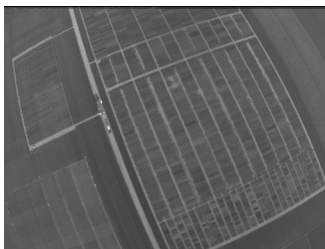
1.2 megapixel monochrome sensors collect data in discrete spectral bands.

16 megapixel RGB photo sensor rolling shutter.

Other multispectral sensor features:

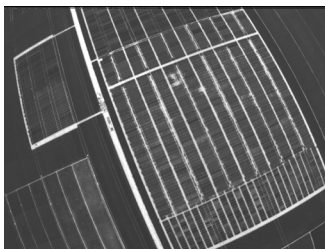
- Inertial measurement unit.
- 64 GB internal memory.
- Magnetometer.





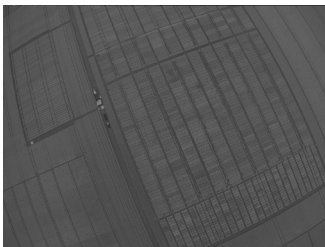
**Green**

550 nm wavelength, 40  
nm bandwidth  
Definition: 1.2 Mpx

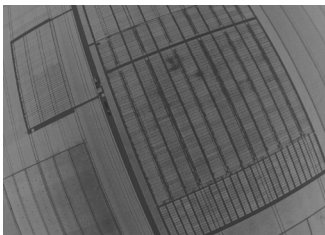


**Red**

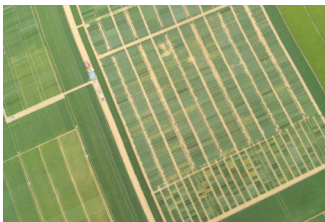
660 nm wavelength, 40  
nm bandwidth  
Definition: 1.2 Mpx

**Red-edge**

735 nm wavelength, 10  
nm bandwidth  
Definition: 1.2 Mpx

**Near infrared**

790 nm wavelength, 40  
nm bandwidth  
Definition: 1.2 Mpx

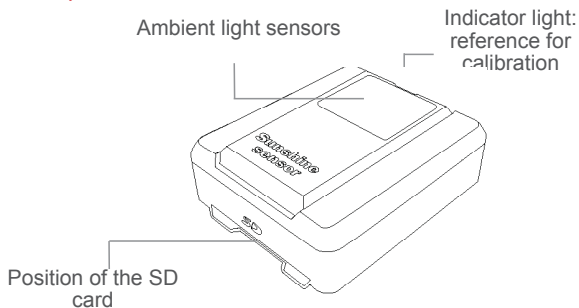
**RGB**

Definition: 16Mpx

## SUNSHINE SENSOR

The sunshine sensor is used to calibrate the images depending on the sunlight. This makes it possible to compare photos over time, despite variations in light during shoots. The sunshine sensor is attached to the upper part of the drone, facing the sky. During flights the sunshine sensor is powered by the multispectral sensor.

**⚠ It is recommended to use the SD card provided with Sequoia. Technical performances are not guaranteed with other SD cards. Refer to the list of compatible SD cards on [www.parrot.com/support](http://www.parrot.com/support).**



4 ambient light sensors. These sensors are fitted with band-pass filters identical to those on the multispectral sensor.

Other sunshine sensor features:

- Inertial measurement unit.
- Magnetometer.

# PRE-FLIGHT CHECKS

## REGULATIONS

- Parrot Bluegrass must be used strictly in compliance with current local regulations. The places where it is used must be suitable for manoeuvring in order to ensure the continuous safety of people, animals and property.
- It may not be permitted to use Parrot Bluegrass in certain public places (e.g. train stations, airports, etc.) or on public roads.
- The pilot must, at all times, maintain visual contact with Parrot Bluegrass and control its trajectory.
- Before you fly your Parrot Bluegrass, check the restrictions regarding the use of Wi-Fi frequencies in the place where you are going to fly it. Certain frequencies may be restricted or prohibited. For instance, in some countries the use of the 5 GHz band for your Wi-Fi may be prohibited for outdoor locations.

## FLIGHT CONDITIONS

- Do not fly Parrot Bluegrass at night.
- Check the weather conditions to ensure good flight and visual conditions. Do not use Parrot Bluegrass if it is raining/snowing, if there is fog, or winds in excess of 8 meters per second or 30 km/hr.
- Do not fly the drone over water.
- Make sure you have at least 10 meters in diameter of clear space for your Parrot Bluegrass to take off and

land. Check that the flight area has no obstacle that might interfere with flight phases or prevent visual contact.

- Make sure the flight altitude programmed in Pix4Dcapture (entered in relation to take off point) is sufficient to avoid obstacles in the surrounding area.

## PARROT BLUEGRASS

- Make sure that Parrot Bluegrass has detected the GPS signal in FreeFlight Pro or Pix4Dcapture.
- Make sure the Parrot Bluegrass propellers are properly mounted and secured.
- Make sure the Parrot Bluegrass battery is charged.
- Make sure you are in a wide, open space.
- Make sure that the selected geobarrier distance is sufficient for the execution of the flight plan on Pix4Dcapture.

## SEQUOIA

- Make sure that the lenses are clean. Use the microfibre cloth (supplied) to clean them.
- Free up enough memory (on the SD card or in the multispectral sensor internal memory) so you can save all the photos taken during the flight.
- Make sure that the two sensors are calibrated. For more information, see the [Calibrating Sequoia](#) section.

# DOWNLOADING THE APPS

Connect to App Store® or Google Play™ and download the free Pix4Dcapture and FreeFlight Pro apps.

FreeFlight Pro is Parrot's official app enabling free drone flying and drone calibration.

Pix4Dcapture is the free app for generating flight plans to capture photos over an area of interest.

## CHARGING THE BATTERY OF PARROT BLUEGRASS

**⚠ The battery must be disconnected from Parrot Bluegrass.**

1. Select the plug provided for your country and insert it into the charger.
2. Connect the cable to the charger.
3. Connect the battery to the charger's cable, and then plug the charger into the mains.

The warning light is red while charging and then turns green when the battery is charged.

The charge time is about 2 hours and 30 minutes for a flight time of about 25 minutes.

## CHARGING THE PARROT SKYCONTROLLER 2 BATTERY

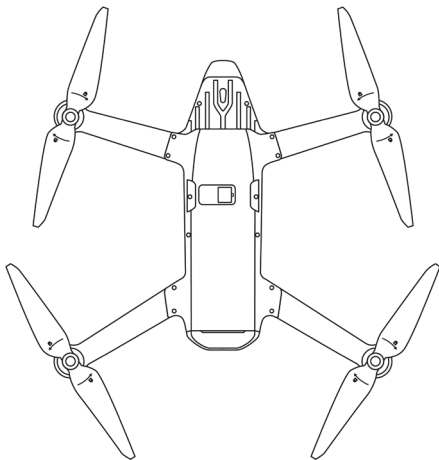
1. Select the adapter appropriate for your country and attach it to the charger.
2. Connect the charger cable to Parrot Skycontroller 2, then plug the charger into the mains.

## INSTALLING THE PROPELLERS

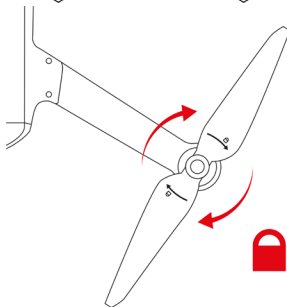
**!** When the drone is turned off, screw the threaded propellers onto the Parrot Bluegrass motors, holding still the base of the engine. The threading serves as coding for the positioning of the propellers on the arms of the drone (scheme B).

**!** Ensure that the propellers are correctly screwed on before take off.

**A**



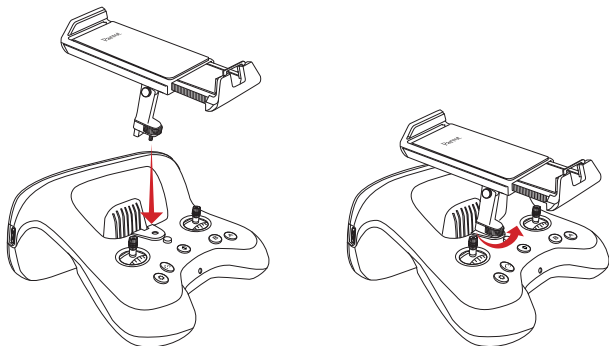
**B**




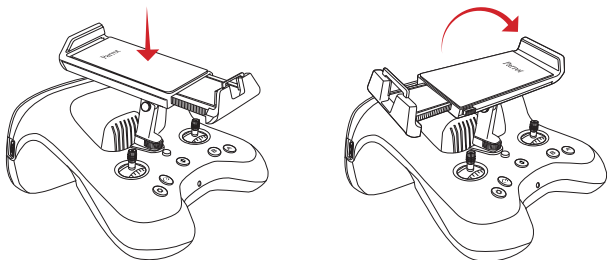


# CONNECT YOUR SMARTPHONE OR TABLET TO PARROT SKYCONTROLLER 2

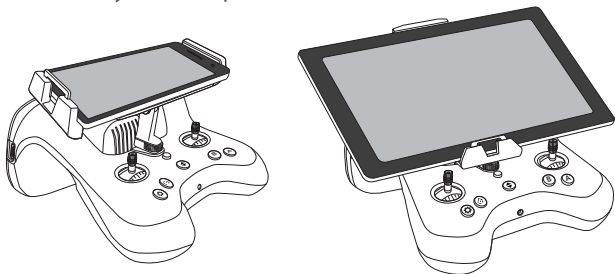
1. Screw the mobile device holder onto Parrot Skycontroller 2.



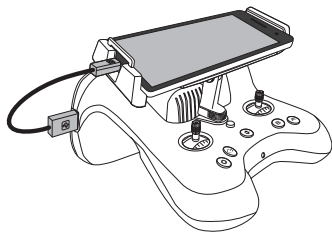
 You can rotate the holder to fit your smartphone's dimensions. To do this, press on it and rotate it to the right.



2. Press the right side of the holder to fully open it.
3. Position your smartphone or tablet on the holder.



4. Tighten the holder on your smartphone or tablet.
5. Using your smartphone or tablet's USB cable, connect your device to the Parrot Skycontroller 2's USB port.



# CONNECT THE DRONE TO PARROT SKYCONTROLLER 2

1. Place Parrot Bluegrass on a flat surface.
2. Turn on your Parrot Bluegrass.
3. Press the Parrot Skycontroller 2 ON/OFF button to turn it on.
4. Wait patiently until the Parrot Skycontroller 2 indicator light is steady green.
  - > You are connected to Parrot Bluegrass, advance to drone calibration and Wi-Fi® settings.
  - > Warning the geobarrier on FreeFlight Pro limits the distancing of the drone when this option is activated: set a geobarrier distance slightly larger than the flight zone.

## CALIBRATE THE DRONE

It is recommended to calibrate the drone before each flight using the FreeFlight Pro app.

If the app displays a window requesting drone calibration, follow the steps shown on the screen.

You can also calibrate the drone manually:

1. Select Parrot Bluegrass in the Freeflight Pro app.
2. Press the Calibration button on the information page on the drone.
3. Follow the on-screen animation.
  - > The animation disappears when calibration is completed; you can then start the flight plan on Pix4D-capture.

## WI-FI SETTINGS

1. Connect the drone using FreeFlight Pro.
2. Select Fly & Film.
3. Tap the Settings button.
4. Selection Country and press the Exterior button.

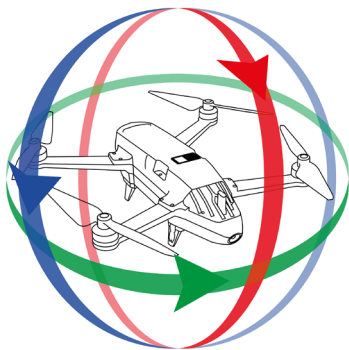
The settings are complete. It will be unnecessary to repeat this step.

## CALIBRATING SEQUOIA

Calibration of the magnetometer

**△ The multispectral sensor flashes purple when a calibration is required.**

1. Turn the drone on the Z axis (yaw - green on the scheme) until the multispectral sensor indicator light flashes green.
2. Turn the drone on the Y axis (pitch - red on the scheme) until the multispectral sensor indicator light flashes blue.
3. Turn the drone on the X axis (roll - blue on the scheme) until the multispectral sensor indicator light changes colour.
  - > NB: Once the calibration is complete the colour of the multispectral sensor light varies depending on Sequoia's status. For example, if the multispectral sensor memory is full, the indicator light will flash yellow.



## USE THE INTERNAL SEQUOIA MEMORY

If Sequoia detects an SD card, the shots are saved on this SD card. If no SD card is detected, Sequoia automatically saves the shots in its internal memory of the multispectral sensor.

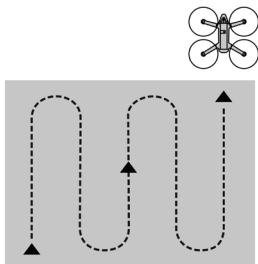
# CREATING A FLIGHT PLAN

It is recommended to create a flight plan on Pix4Dcapture before arriving at the flight site.

- > At the first launch of the Pix4Dcapture app, choose the Parrot Bluegrass from the list of drones, and then proceed to editing the flight plan.

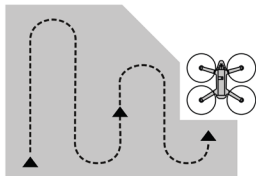
You can create two types of flight plan for Parrot Bluegrass:

Grid: the drone performs a grid flight of the defined area



according to the itinerary displayed on the screen.

Polygon: the drone performs a grid flight of the area



drawn on the screen according to the itinerary displayed. For more detailed information on flight plans and their creation go to the Pix4Dcapture support page:


Android:<https://www.parrot.com/uk/pix4dcapture-android>

iOS:

<https://www.parrot.com/uk/pix4dcapture-ios>

## START THE FLIGHT PLAN

1. Ensure that Parrot Bluegrass is connected to Parrot Skycontroller 2. For more information, consult the section: Connecting the drone to Parrot Skycontroller2.
2. Connect your smartphone or tablet to the USB port of Parrot Skycontroller 2.
3. Launch the Pix4Dcapture app.
4. Open Mission Manager.
5. Select the flight plan to perform.
6. Press START in Pix4Dcapture.
  - > The app connects to the drone, a checklist appears. If the settings are valid, the START button will allow you to launch the mission.
  - > Parrot Bluegrass takes off and begins the flight plan.
  - > The drone returns to its starting point and lands once the flight plan has finished.
  - > You can take back control at any moment using Parrot Skycontroller 2 or by pressing on Abort on Pix4Dcapture.

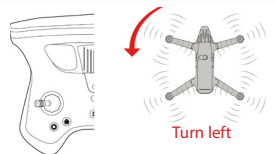
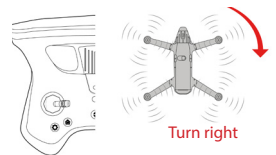
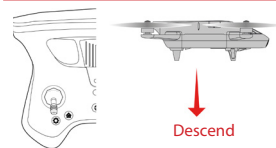
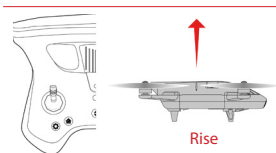
 **Ensure that there is sufficient charge in the battery to complete the flight plan in its entirety.**

# PILOT MODES

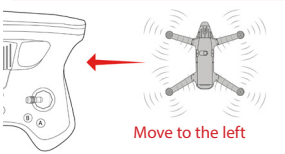
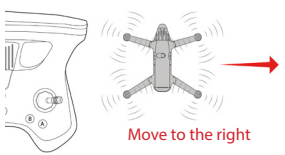
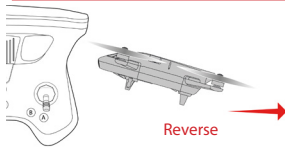
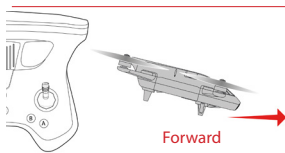
## PARROT SKYCONTROLLER 2

At any time during the execution of the flight plan on Pix4Dcapture you can resume control of the drone by pressing one of the controls on Parrot Skycontroller 2.

### LEFT CONTROL




### RIGHT CONTROL



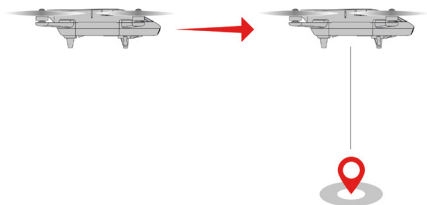
> The buttons may be reconfigured using the FreeFlight Pro app.




## RETURN TO STARTING POINT

To bring Parrot Bluegrass back to its starting point outside of a flight plan on Pix4Dcapture, press the  button on Parrot Skycontroller 2.

> Parrot Bluegrass returns to its starting position.



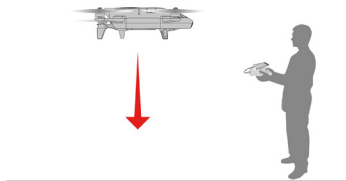
 Make sure you are in a wide, open environment, free of any obstacle.

## LAND

Press the  button on Parrot Skycontroller 2.

> Parrot Bluegrass lands.

 In order to avoid damaging Parrot Bluegrass, land on a suitable surface, free of obstacles.



# BEHAVIOUR OF SEQUOIA INDICATOR LIGHTS

For more information on Sequoia settings, download the Sequoia user guide available on [Parrot.com](http://Parrot.com).

## General

Quick flashing orange	Shutting down
Slow flashing orange	Update in progress
Flashing blue	Enabling/Disabling Wi-Fi

## Problem

Continuous red	Hardware malfunction
Flashing red	Corrupted memory. Repair in progress. Once the repair is complete the LED returns to green. This operation may take several seconds depending on the space available on your SD card.
Flashing yellow	Memory full

## Calibration of the magnetometer

Steady purple	The sensor must be stationary for 1 second
Flashing purple	The sensor needs to be calibrated
Flashing green	Calibration in progress (pitch axis)
Flashing cyan	Calibration in progress (roll axis)

## Photo shoot

Continuous blue	Shot being taken
Continuous light green	At least one of the four sensors is enabled
Flashing light green	Writing files is underway

# SUNSHINE SENSOR

Problem	
Continuous red	Hardware malfunction
Flashing yellow	SD Card full

Calibration of the magnetometer	
Steady purple	The sensor must be stationary for 1 second
Flashing purple	The sensor needs to be calibrated
Flashing green	Calibration in progress (pitch axis)
Flashing cyan	Calibration in progress (roll axis)

# UPDATING SEQUOIA

## VIA AN SD CARD

1. Insert your SD card in a computer and make sure that it contains no files in .plf format.
2. Visit the Sequoia support page: [www.parrot.com/fr/support/](http://www.parrot.com/fr/support/)
3. Download the update file available in .plf format.
4. Copy the file to the root directory on your SD card without putting it in a folder or renaming it.
5. Insert the SD card in the sunshine sensor.
6. Turn on the drone.
  - >The update launches automatically. During the update the multispectral sensor indicator light flashes orange. Once the update is complete the light turns green.

## VIA THE SEQUOIA WEB INTERFACE

Connect to the drone's Wi-Fi network then enter the IP address 192.168.42.2 into the Web browser.

1. Visit the Sequoia support page:[www.parrot.com/support/](http://www.parrot.com/support/)
2. Download the update file available in .plf format.
3. Connect to the Sequoia Web interface.
4. Go to Settings.
5. Click on Update Sequoia.
6. An explorer window will open.
7. Select your update file and click Open.
8. A Send button appears in the Settings page.
9. Click the Send button.


>The update will automatically launch, the multispectral sensor's indicator light will turn orange.

# RETRIEVE PHOTOS

During the flight, if no SD card is inserted, photos are stored on the internal memory of the multispectral sensor.

## VIA AN SD CARD

1. Insert your SD card into an adapter which is compatible with your computer.
2. Retrieve the photos taken during the flight.

 **Do not remove the SD card when the drone is turned on.**

## VIA WI-FI

1. Connect to the Bluegrass\_XXXX Wi-Fi and enter the IP address 192.148.42.2 into the Web browser Sequoia automatically turns on.
2. Go to the Gallery tab and retrieve the photos taken during the flight.

# DATA PROCESSING WITH AIRINOV FIRST+

Go to <http://parrot.airinov.com> and follow the on-screen steps for processing your data.

For more information go to [www.parrot.com/support](http://www.parrot.com/support).

However, the images retrieved by Sequoia can be processed in several ways.

## WITH THE DATA MANAGEMENT SOFTWARE MICASENSE ATLAS

You can analyse the photos taken by Sequoia with the MicaSense ATLAS software. For more information, go to [www.micasense.com](http://www.micasense.com).

## WITH THE PIX4DMAPPER MAPPING SOFTWARE

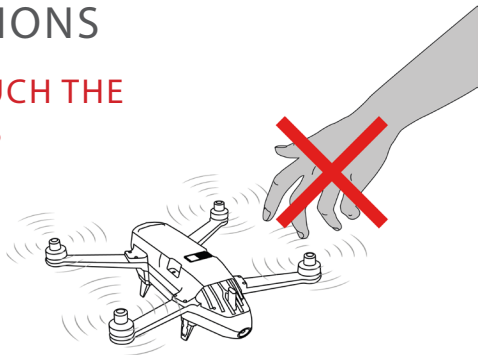
You can analyse the photos taken by Sequoia with the Pix4DMapper software. For more information, go to [www.pix4d.com](http://www.pix4d.com).

## AGRONOMIC RECOMMENDATIONS FROM AIRINOV

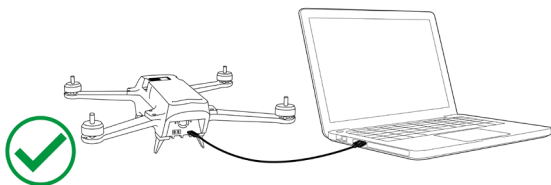
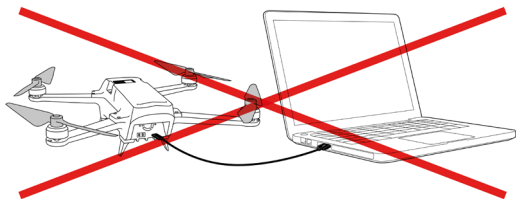
Airinov offers a nitrogen fertiliser recommendation service for rapeseed and wheat. For more detailed information visit [www.airinov.fr](http://www.airinov.fr).

# PRECAUTIONS

## DO NOT TOUCH THE PROPELLERS



- ⚠ Do not touch the propellers of the drone while the motors are functioning. Take all precautions necessary concerning property and persons.
- ⚠ Remove the propellers from Parrot Bluegrass before connecting it to a computer.





# BEHAVIOUR OF THE INDICATOR LIGHT

## PARROT SKYCONTROLLER 2

Flashing red	<p>Parrot Skycontroller 2 is trying to connect to a drone. &gt; Make sure your drone is turned on.</p> <p><u>Or</u></p> <p>The battery of Parrot Skycontroller 2 or your drone is low. &gt; Recharge the battery.</p> <p><u>Or</u></p> <p>Parrot Skycontroller 2 has detected a problem with the drone. &gt; Go to the Support section on <a href="http://www.parrot.com">www.parrot.com</a>.</p>
Continuous green	<p>Parrot Skycontroller 2 is connected to the drone. &gt; You can fly the drone.</p>

## PARROT BLUEGRASS

Flashing blue	Parrot Bluegrass has detected the GPS signal and is ready to take off.
Flashing green	Parrot Bluegrass is in flight.
Flashing yellow	The update of Parrot Bluegrass is underway. Do not turn off Parrot Bluegrass
Flashing red and blue	Parrot Bluegrass has detected a problem with the battery. Contact your retailer or go to the Parrot Bluegrass support page on <a href="http://www.parrot.com">www.parrot.com</a> .
Flashing red	Parrot Bluegrass has detected an error. > An error message appears on the FreeFlight Pro app. Go to the table of error codes available on the Parrot Bluegrass support page.

# TECHNICAL SPECIFICATIONS

## SENSORS

- Ultrasound
- Altimeter
- Hi-speed vertical camera

## INERTIAL NAVIGATION SYSTEM

- Three-axis gyroscope
- Three-axis accelerometer
- Three-axis magnetometer

## AUTOPILOT

- Dual-core ARM 9 CPU
- Internal flash memory for HD video from the front-facing camera: 32 GB

## WI-FI AND TRANSMISSIONS

- Network access point
- AC Wi-Fi, 2 dual band antennae (2.4 and 5 GHz), multiple inputs and outputs

## REMOVABLE BATTERY

- 4 cell 99 Wh battery
- Battery life: 25 minutes
- Rated voltage: 14.8 V
- 20 A continuous discharge
- Charge at 1 C max.
- Operating range: 0 °C-40 °C

## DIMENSIONS

- Weight: 1.850 kg
- Size: 1150 mm x 580 mm x 120 mm

## GPS

- Integrated GPS
- GPS + GLONASS

## PERFORMANCE

- Engine:700 kv

## VIDEO & PHOTOS

- Full HD 1080p front-facing camera
- With FreeFlight Pro flux video: 360 p/720 p

## PARROT SKYCONTROLLER 2 CHARGER

- Input: 100-240 V, 50h-60 Hz, 1.2A
- Output: Max. 12.6 Vdc, 3.5 A
- Operating range: 0 °C-40 °C

# SEQUOIA MAINTENANCE

## CLEANING THE SENSORS

If dust or dirt gets on the lens and/or sensors:

1. Use the microfibre cloth (supplied) to clean the lens.
2. Remove any remaining traces with a cotton bud soaked in lens cleaner.

## OBTAINING SPARE PARTS

Go to the website [www.parrot.com](http://www.parrot.com) to find the spare parts available.

# GENERAL INFORMATION

## ACCESSORIES AND SPARE PARTS

Accessories and spare parts are available from your Parrot retailer or on [www.parrot.com](http://www.parrot.com).



## PRECAUTIONS FOR USE AND MAINTENANCE

### PARROT SKYCONTROLLER 2

Parrot Skycontroller 2 is intended to fly Parrot Bebop, Parrot Bebop 2, Parrot Disco and Parrot Bluegrass, and is not suitable for children under 14 years of age.

Check the list of drones that are compatible with Parrot Skycontroller 2 in the Support section on [www.parrot.com](http://www.parrot.com).

Only use accessories specified by Parrot Drones SAS.

If sand or dust gets into Parrot Skycontroller 2, it may be irreparably damaged and no longer function correctly.

Do not expose Parrot Skycontroller 2 to rain or sun for an extended period.

Do not use this device near liquids.

Risk of ingestion of small objects. The packaging is not part of the product and must be discarded as a safety measure.

### PARROT BLUEGRASS

The maximum video recording time is 29 minutes.

Parrot Bluegrass is not suitable for children under 14 years of age.

The pilot must, at all times, maintain visual contact with Parrot Bluegrass and control its trajectory. Parrot Bluegrass must be used according to the rules of civil aviation in your country. The places where it is used must be suitable for manoeuvring in order to ensure the continuous safety of people, animals and property. It may not be permitted to use Parrot Bluegrass in certain public places (e.g. train stations, airports, etc.) or on public roads.

The Parrot Bluegrass's propellers in flight can cause damage to persons or objects. Do not touch Parrot Bluegrass when in flight. Wait until the propellers stop completely before handling Parrot Bluegrass.

Only use accessories specified by Parrot Drones SAS.

If sand or dust gets into Parrot Bluegrass, it may be irreparably damaged and no longer function properly.

Do not use Parrot Bluegrass in adverse weather conditions (rain, strong wind or snow) or when visibility is poor (at night or in fog).

Keep Parrot Bluegrass away from high-voltage power lines, buildings or any other potentially hazardous areas.

Do not land or fly Parrot Bluegrass over water or a wet surface as this could cause irreparable damage. Do not place Parrot Bluegrass on snow.

Avoid making Parrot Bluegrass undergo drastic changes in altitude.

Do not leave Parrot Bluegrass in the sun.

Risk of ingestion of small objects. The packaging is not part of the product and must be discarded as a safety measure.

## SEQUOIA

Only use accessories specified by the manufacturer.

If sand or dust gets into Sequoia it may be irreparably damaged and no longer function correctly.

Do not use Sequoia in adverse weather conditions (rain, strong winds, snow) or when visibility is poor (at night or in fog).

Keep Sequoia away from high voltage power lines, buildings or any other potentially hazardous areas.

Do not use this device near liquids. Do not place Sequoia on water or on a wet surface as this could cause irreparable damage.

Avoid making Sequoia undergo drastic changes in altitude.

Do not leave Sequoia in the sun.

Risk of ingestion of small objects. The packaging is not part of the product and must be discarded as a safety measure.

If you use Sequoia with a drone refer to the general information for your drone.



### WARNING REGARDING PRIVACY AND RESPECT FOR IMAGES OF PROPERTY

Recording and broadcasting an individual's image without their permission may constitute an invasion of privacy and you may be held liable. Ask permission before filming people, especially if you intend to keep your recordings and/or broadcast them. Do not broadcast degrading images which may affect an individual's reputation or dignity.

Recording and broadcasting the image of property without permission from its owner and or any third party holding intellectual property rights on the property may constitute a violation of the property's image rights and you may be held liable. Ask permission from its owner and/or any third party with ownership rights.

## MODIFICATIONS

The explanations and specifications contained in this user guide are provided for information purposes only and may be amended without prior notification. This information is correct at the time of printing and the utmost care has been taken in preparing it to provide you with the most accurate information possible. However, Parrot Drones SAS cannot be held responsible or liable, directly or indirectly, for any damages or unintentional loss of data resulting from an error or omission in this document. Parrot Drones SAS reserves the right to amend or improve the product as well as the user guide without any restrictions or any obligation to inform the user. As part of Parrot Drones SAS' focus on improving our products, it is possible that the product you have purchased differs slightly from the one described in this document. In this case you may be able to find a new version of the user guide in electronic format on the [www.parrot.com](http://www.parrot.com) website.

## GUARANTEE

For the warranty conditions, please read the Terms and Conditions of sale of the retailer where you purchased the Parrot Bluegrass.

## WI-FI

Before you fly your Parrot Bluegrass, check the restrictions regarding the use of Wi-Fi frequencies in the place where you are going to fly it. Certain frequencies may be restricted or prohibited. For instance, in some countries the use of the 5 GHz band for your Wi-Fi may be prohibited for outdoor locations.

## HOW TO RECYCLE THIS PRODUCT (PARROT SKYCONTROLLER 2 AND PARROT BLUEGRASS)



This symbol on the product or its documentation indicates that it must not be disposed of with household waste. Uncontrolled waste disposal may harm the environment or human health. Please separate your device from other types of waste to recycle it responsibly. This will help to foster the sustainable recycling of material resources. Please contact your retailer or your local council to seek information about ways to recycle Parrot Skycontroller 2 and Parrot Bluegrass.

## EU DECLARATION OF CONFORMITY (PARROT SKYCONTROLLER 2)

Parrot Skycontroller 2 can be used in: DE, AT, BE, BG, CY, HR, DK, ES, EE, FI, FR, GR, HU, IR, IT, LV, LT, LU, MT, NL, PL, PT, CZ, RO, GB, SK, SI, SE.

Parrot DRONES, 174 quai de Jemmapes, 75010 Paris, France, hereby declares that it is solely responsible for the compliance of the product described in this user guide with technical standards, EN 301489-17, EN300328, EN71-1, EN71-2, EN71-3, EN62115, EN 50566: 2013 (SAR) under the provisions of the RED directive 2014/53/EU and the General Product Safety Directive 2014/35/EU.

<http://www.parrot.com/ce/?skycontroller-2>

## EU DECLARATION OF CONFORMITY (PARROT BLUEGRASS)

This device can be used in: DE, AT, BE, BG, CY, HR, DK, ES, EE, FI, FR, GR, HU, IE, IT, LV, LT, LU, MT, NL, PL, PT, CZ, RO, GB, SK, SI, SE.

The outdoor use restriction in member states of the European Union relates only to the first in the 5GHz band (5150-5250MHz).

PARROT DRONES SAS, 174 quai de Jemmapes, 75010 Paris, France, declares on its sole responsibility that the product described in the present guide complies with technical standards EN 301489-1, EN 301489-3, EN 301489-17, EN 62311, EN300328, EN301893, EN300 440-2, EN60950-1, EN50581 in compliance with the provisions of R&TTE directive 1999/5/EC, the general product security directive 2001/95/EC and the RED directive 2014/53/EU.

<http://www.parrot.com/fr/ce/?bluegrass>

## CANADA DECLARATION OF CONFORMITY (PARROT SKYCONTROLLER 2)

Parrot Skycontroller 2 complies with the Industry Canada RSS applicable to license-exempt radio apparatus. Operation is permitted subject to the two following conditions: (1) the apparatus must not produce interference, and (2) the apparatus user must accept any radio interference subjected to even if the said interference is likely to compromise its operation.



## CANADA DECLARATION OF CONFORMITY (PARROT BLUEGRASS)

This device complies with the Industry Canada RSS applicable to license-exempt radio apparatus. Operation is permitted subject to the two following conditions: (1) the apparatus must not produce interference, and (2) the apparatus user must accept any radio interference subjected to even if the said interference is likely to compromise its operation. This category B digital device is compliant with the NMB-003 standard of Canada.

### FCC

To comply with the FCC/IC RF exposure guidelines for transmission equipment, a distance of at least 20 cm must be maintained between the product antenna and individuals. To remain compliant it is not recommended to use the product at any distance less than this.

This device complies with part 15 of the Industry Canada RSS applicable to license-exempt radio apparatus.

Operation is permitted subject to the two following conditions:

1. The device must not cause interference;
2. The user of the equipment must accept any interference suffered, even if the interference is likely to affect the operation of the equipment.

This mobile device with an antenna meets the FCC limits for radiation exposure established for an uncontrolled environment. This device meets the limits of the specific absorption rate (SAR) of the FCC. To ensure compliance, follow these instructions: this transmitter must not be co-used or operated at the same time as another antenna or transmitter.

### BATTERY (PARROT SKYCONTROLLER 2 AND PARROT BLUEGRASS)

**WARNING:** Failure to follow all the instructions may result in serious injury, irreparable damage to the battery and may cause a fire, smoke or explosion.

Before long-term storage, ensure that the battery is charged to at least 50% capacity. It is recommended to charge your battery every 3 months and to proceed to an addition charge if necessary.

Always check the battery's condition before charging or using it. Replace the battery if it has been dropped, or in case of odour, overheating, discolouration, deformation or leakage. It is recommended that you do not to use any other charger than the one provided with the product. The temperature of the battery should never exceed 60 °C (140 °F) otherwise the battery may become damaged or ignited. Never charge on a flammable surface, near flammable products or inside a vehicle (preferably place the battery in a non-flammable and non-conductive container). Never leave the battery unattended during the charging process. Never disassemble or modify the housing's wiring, or puncture the cells. Do not short circuit the batteries. Never expose the LiPo battery to moisture or direct sunlight, or store it in a place where temperatures could exceed 60 °C (car in the sun, for example). If the battery is not used for a long time, it will gradually discharge. Always keep it out of reach of children.

## WARNING

RISK OF EXPLOSION IF THE PARROT BLUEGRASS BATTERY IS REPLACED WITH AN INCOMPATIBLE BATTERY.

DISPOSE OF USED BATTERIES ACCORDING TO INSTRUCTIONS.

For more information about batteries, visit the website

<http://www.parrot.com/support>

## TRADEMARKS

Parrot and the Parrot logo are trademarks of Parrot SA, used under licence.

Parrot Bebop drone, Parrot Bebop, Parrot Bebop 2, Parrot Disco, Parrot Bluegrass, Parrot Skycontroller, Parrot C.H.U.C.K. and Sequoia, the FreeFlight Pro app as well as their respective logos are trademarks of Parrot Drones SAS.

iPhone is a trademark of Apple Inc., registered in the United States and in other countries.

ARM and Cortex are trademarks registered to ARM Limited (or its subsidiaries) in the European Union and/or elsewhere. All rights reserved.

Wi-Fi(R) is a registered trademark of Wi-Fi Alliance(R).

Pix4D and Pix4Dcapture and Pix4Dmapper are registered trademarks of Pix4D SA.

Airinov and Airinov First+ are tradenames or registered trademarks of Airinov SAS.

App Store is a trademark of Apple Inc.

Google Play are trademarks of Google Inc.

All other trademarks mentioned in this guide are the property of their respective owners.

## MANUFACTURER INFORMATION

Parrot Bluegrass, Sequoia and Parrot Skycontroller 2 are manufactured by: Parrot Drones SAS - 174 Quai de Jemmapes - 75010 Paris (France) - Corporate and Trade Register of Paris 808 408 074 - [www.parrot.com](http://www.parrot.com)

